

**ITtile Floors**  
**Our Customers:**  
**Aerospace**  
**Automotive**  
**Marine**  
**Aviation**  
**Museums**  
**Sound and Film Studios**  
**Entertainment**  
**Athletic Facilities**  
**Gas & Petroleum**  
**Construction**  
**Malls**  
**Remodel**  
**Storage**  
**Medical**  
**US Armed Forces**



**Manufacture of Interlocking  
Luxury Vinyl Tiles**



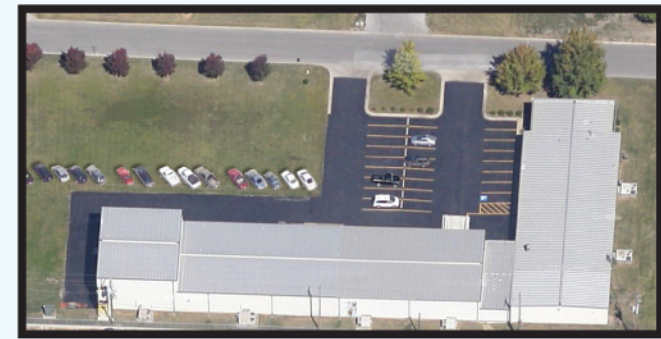
**Our Mission**

Manufacture and distribute quality interlocking vinyl tiles and components in the most efficient and economical methods available.

Provide service and commitment that is world class and environmentally friendly.

Giving our customer the opportunity to be the very best.

**ITtile Floors**  
4632 N. 7th Avenue  
Phoenix, Az 85013 USA  
Phone: 602.501.9075  
Fax: 816.765.7345  
Email: sales@ITtile.com





## Product design and development

ITtile's design and development environment bring elements of both Quality and Supplier management together. In our manufacturing environment the Engineering team works closely with our supply base and Quality Engineering teams to bring a competitive product to market by way of a highly collaborative process.

ITtile allows designers to have real-time, life-like interactions with manufacturing to maximize creative input into design reviews and brainstorming sessions.

The fact that a majority of a product's costs are determined by decisions that occur in the very early design phase is a well understood dynamic of product development. That is why we feel it is important to facilitate frequent collaboration during this critical phase with key individuals that have the expertise to contribute to the design and look of our interlocking tile.



## Environmentally Friendly

With regard to the effect we might have on the environment, we are steadfastly committed to minimizing the impact of our activities on the environment. We use recycled materials and our product is recyclable.

## Manufacturing

- Our manufacturing facility employs leading-edge production technology
- Accurate and efficient production is achieved through utilization of the latest technology in injection molding. This allows us to provide our customers with competitive pricing
- Maximum output is currently one 20.5"x20.5" tile every 10 seconds
- Detailed and concise manufacturing procedures yield world-class performance and world class tile



## Quality

- Our commitment to quality is unparalleled, our machines have an accuracies of 0.0005"
- All products have complete traceability from the foundry as raw material to individual product deliveries at our customers' locations.
- Stringent quality standards are enforced throughout all manufacturing processes to ensure exacting specification compliance
- Detailed and concise manufacturing procedures yield world-class performance and world class tile.