

ITtile Floors
Our Customers:
Aerospace
Automotive
Marine
Aviation
Museums
Sound and Film Studios
Entertainment
Athletic Facilities
Gas & Petroleum
Construction
Malls
Remodel
Storage
Medical
US Armed Forces

ITtile Floors
4632 N. 7th Avenue
Phoenix, Az 85013 USA
Phone: 602.501.9075
Fax: 816.765.7345
Email: sales@ITtile.com



**Manufacture of Interlocking
Luxury Vinyl Tiles**

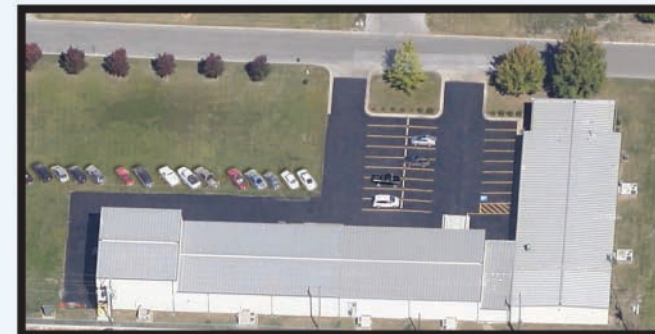


Our Mission

Manufacture and distribute quality interlocking vinyl tiles and components in the most efficient and economical methods available.

Provide service and commitment that is world class and environmentally friendly.

Giving our customer the opportunity to be the very best.



Product design and development

ITtile's design and development environment bring elements of both Quality and Supplier management together. In our manufacturing environment the Engineering team works closely with our supply base and Quality Engineering teams to bring a competitive product to market by way of a highly collaborative process.

ITtile allows designers to have real-time, life-like interactions with manufacturing to maximize creative input into design reviews and brainstorming sessions.

The fact that a majority of a product's costs are determined by decisions that occur in the very early design phase is a well understood dynamic of product development. That is why we feel it is important to facilitate frequent collaboration during this critical phase with key individuals that have the expertise to contribute to the design and look of our interlocking tile.



Environmentally Friendly

With regard to the effect we might have on the environment, we are steadfastly committed to minimizing the impact of our activities on the environment. We use recycled materials and our product is recyclable.

Manufacturing

- Our manufacturing facility employs leading-edge production technology
- Accurate and efficient production is achieved through utilization of the latest technology in injection molding. This allows us to provide our customers with competitive pricing
- Maximum output is currently one 20.5"x20.5" tile every 10 seconds
- Detailed and concise manufacturing procedures yield world-class performance and world class tile



Quality

- Our commitment to quality is unparalleled, our machines have an accuracies of 0.0005"
- All products have complete traceability from the foundry as raw material to individual product deliveries at our customers' locations.
- Stringent quality standards are enforced throughout all manufacturing processes to ensure exacting specification compliance
- Detailed and concise manufacturing procedures yield world-class performance and world class tile.

